



REM CRUSADER (VS 485 CD)



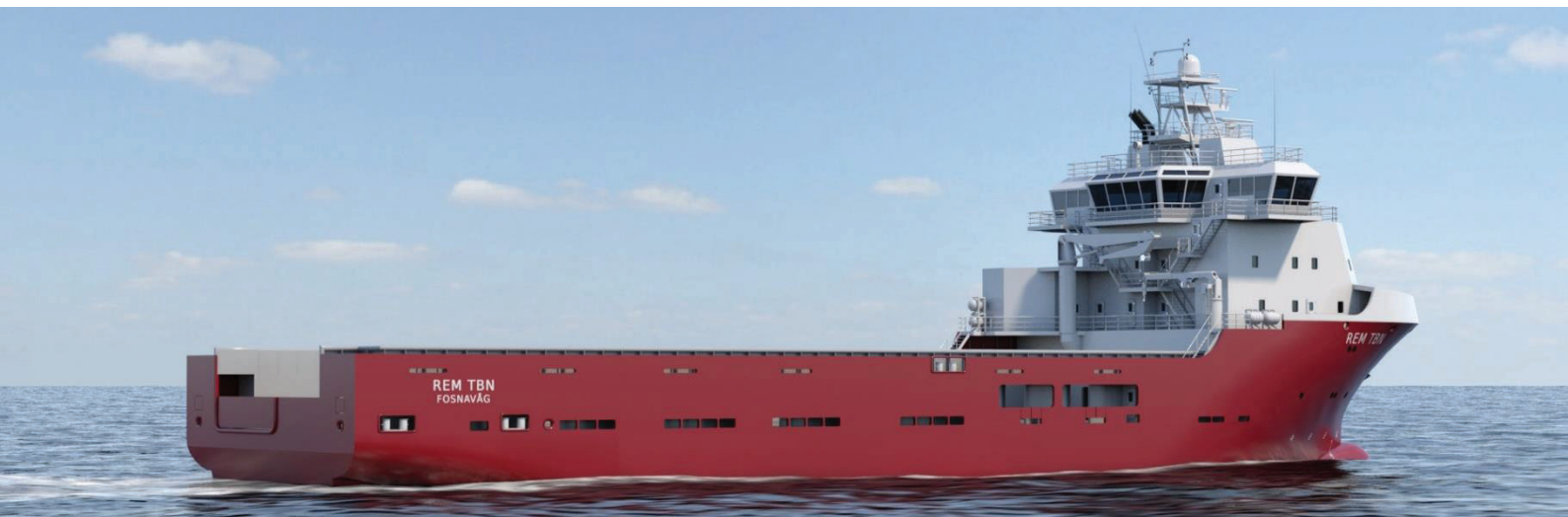
REM CRUSADER is a large and modern PSV. The vessel has large under deck capacity for bulk and 1,005m² free deck area with deck strength 10t/m².

The vessel is diesel electric powered and can be operated with a Onshore Power System enabling the vessel to operate on shore power during loading/unloading ashore. The vessel is certified with DNV according to Clean Design and with high comfort class (C-3, V-3). The vessel is equipped with Blue Energy Management System to manage and optimize vessel energy consumption.

Top Features	Key Specifications
Large liquid bulk cargo capacities	Deadweight: 5.433 t
Large dry bulk cargo capacities	Large Deck Load Capacity: TDB
Mud tanks with segregations	Free Deck Area: 1,005m ²
Large ORO capacity - NOFO 2005	Brake Horsepower: 10,341 BHP/ 7,604 kW
Hydraulic driven agitators in each mud tank	ESI number: TDB
Tank washing in Mud, Brine, Special Product and Slop tanks	DP Capability L1: TBD
Quiet & comfortable accommodation	ERN: TBD
Onshore Power System - 690VAC/ 600A/ 60Hz	



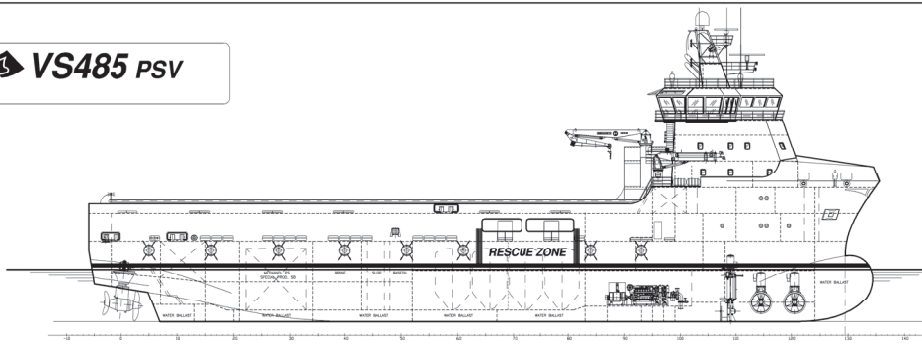
REM CRUSADER (VS 485 CD)



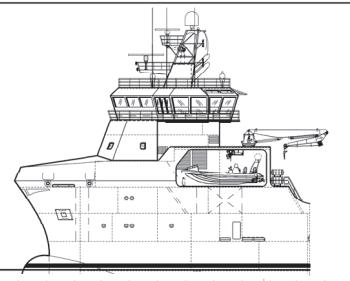
General information	
Vessel name	CRUSADER (TBN REM CRUSADER)
Built	Hellesøy Yard, 2010
Flag	NIS
Call Sign	TBD
IMO No.	9462770
Class	DNV
Class Notation	1A1, Ice C, Dynpos (AUTR), Clean (Design), COMF(C-3, V-3), EO, LFL, SF, Oil Rec, DK(+), HL(P), Compliance to NAUT(OSV(A))
Dimensions	
Length (LOA)	85.0 m
Beam	20.0 m
Summer Draft	TBD
Free Deck Area	1,005 m ²
Deadweight	5,433 t
GT (ITC 69)	4,366 t
Deck Capacities	
Deck Load Capacity	2,800 t
Deck Strength	10 t/m ²
Gross Deck area	1,005m ²
Net Deck Area	1,005m ²
Deck dimensions	60.6 m x 16.8 m
Engine & Propulsion	
Main generator	4 x 1,901kW Caterpillar 3516
Main propellers	2 x 2,300kw Steerprop FC
Bow Trusters	2 x 1.000kW Brunvoll
Bow Thruster Azimuth	1 x 800kW Brunvoll Retractable
Dynamic position system	
Type	Kongsberg DP11 K-pos
Reference system	1xFanbeam Mk4.2, 2xDPS 200cm, 1xRadaScan
Motion Reference	3 x Anschütz 22, 1 x MRU2, 1 X MRU5 2 x Windsensor Gill

Tank capacities	
Fuel Oil	903.5 m ³ (2 x 0-150m ³ / h)
Base Oil	203.0 m ³ (2 x 0-100m ³ / h)
Mud, SG 2,8	702.9 m ³ (4 x 0-100m ³ /h)
Brine, SG 2,5	418.0 m ³ (2 x 0-150m ³ / h)
FW	1007.3 m ³ (2 x 0-150m ³ / h)
Methanol LFL*	145.5 m ³ (1 x 0-75m ³ /h)
Special Product LFL*	146.0 m ³ (1 x 0-75m ³ /h)
Dry Bulk	440.0 m ³ (2 x 30m ³ / h)
Slop	186.8 m ³ (2 x 0-100m ³ /h)
DW/ BW	2470.0 m ³ (2 x 0-150m ³ / h)
ORO	1803.2 m ³ (2 x 0-100m ³ /h)
Deck equipment	
Windlass	2 off Windlass Mooring Winch
Tugger Winches	2 off tugger winch 15 ton
Capstans	2 off Capstan, 8 ton
Cargo Securing Winches	6 off Securing winches, 3 ton
Deck Crane, PS	1 off TTS Marine GPK-115, 3 ton - 13 m
Deck Crane, SB	1 off TTS Marine GPT-80, 3 ton - 13 m
FRC Davit	1 off HLT 3 500 TTS
FRC	1 off FRC 10 person
Reefer Sockets	12 x EX 230V 16Amp
Life Rafts	Viking, 4 x 25 person
Performance	
Max Speed	15.4 knop – 24.0 t/ 24 h
Transit Speed	14 knop – 19.5 t/ 24 h
Eco Speed	10 knop – 9.2 t/ 24 h
DP Operation	3.4 t/ 24 h
Standby outside Safety Zone	0/1.8 t/ 24 h
Port - Shore Power/ Engine	0/1.8 t/ 24 h
Accommodation	
Person capacity	23 persons
Cabins	13 x 1-man + 5 x 2-man

All information in this document are provided in good faith without any guarantee. Please contact Remøy Shipping AS to verify the information in this document prior to using or relying on any of the information in this document.

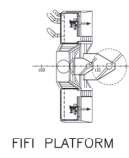


PROFILE SB

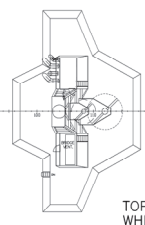


PROFILE PS

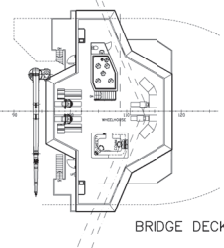
TOP OF WHEELHOUSE 20.00 m RL
 BRIDGE DECK 21.00 m RL
 D DECK 20.00 m RL
 C DECK 17.00 m RL
 B DECK 14.00 m RL
 A DECK 11.00 m RL
 1st DECK 8.00 m RL
 2nd DECK 4.00 m RL
 TANK TOP 12.00/8.00 m RL



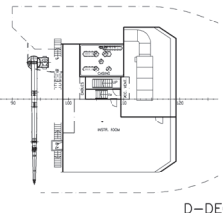
FIFI PLATFORM



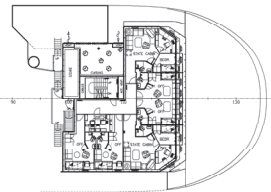
TOP OF WHEELHOUSE



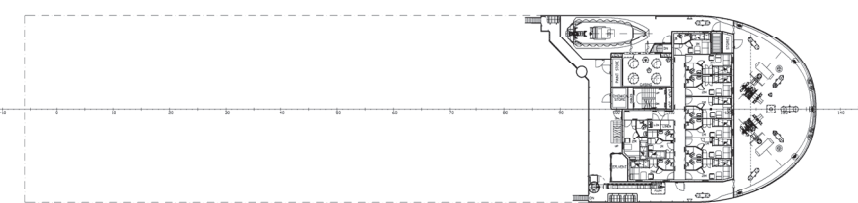
BRIDGE DECK



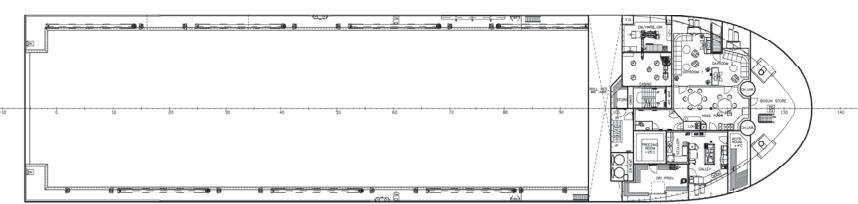
D-DECK



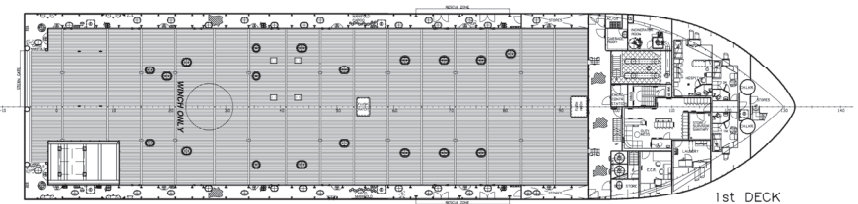
C-DECK



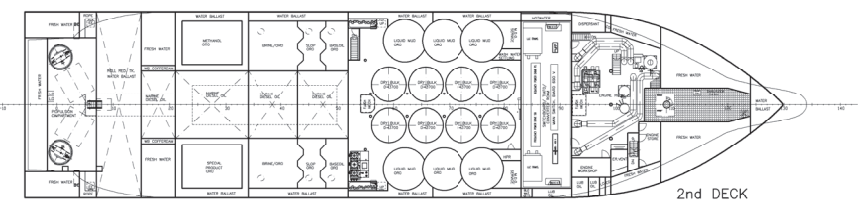
B-DECK



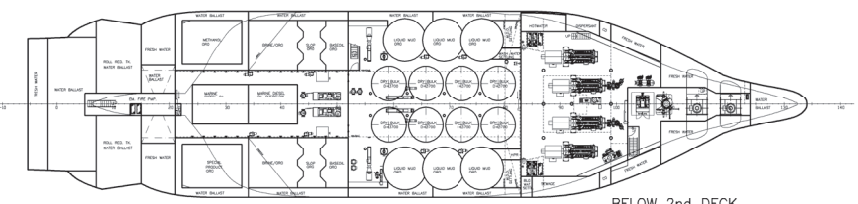
A-DECK



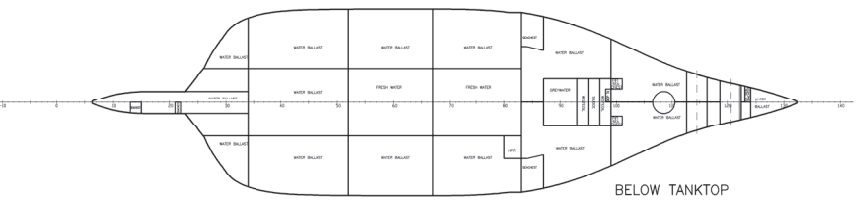
1st DECK



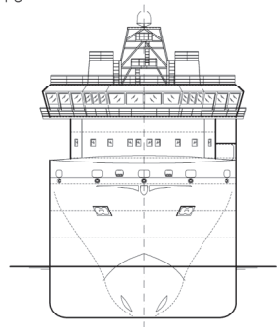
2nd DECK



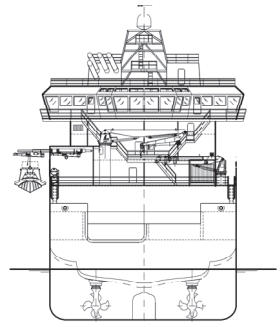
BELOW 2nd DECK



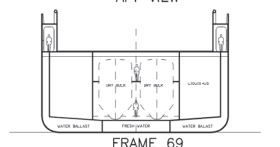
BELOW TANKTOP



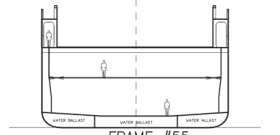
FRONT



AFT VIEW



FRAME 69



FRAME #55



FRAME 38



FRAME 28

CABIN PLAN

	In Plan	In Plan	TOTALS
	Cabins	Cabins	CABINS
C-DECK	7pers	-	6 CABINS
B-DECK	7pers	6pers	10 CABINS
D-DECK	-	4pers	2 CABINS
1st DECK	-	4pers	2 CABINS
TOTALS	13pers	10pers	20pers

PRINCIPAL PARTICULARS:

LENGTH OVER ALL:	85.00 m
LENGTH BETW. PERP:	77.70 m
BREADTH:	20.00 m
DEPTH TO 1st DECK:	9.60 m
DEPTH TO 2nd DECK:	5.40 m
DECK AREA:	1000 m ²
FRAME SPACING:	600 mm

USED FOR INFORMATION
 NOT SUBJECT TO APPROVAL
 Date: 2007-03-02
 DET NORSE VERITAS AS

PLATFORM SUPPLY VESSEL VS485 PSV

GENERAL ARRANGEMENT

SCALE: 1:200

DATE: 2007-03-02

PROJECT NO: 3748

101-001

1/1



REM CRUSADER (VS 485 CD)

Tank capacities @ 100%														
Tank no	Description	SG	Volume	BW/ DW	FW	FO	Mud	Brine	Base Oil	Methanol	Special Product	Dry bulk	Slop	ORO
		t/m ³	m ³	MT	MT	MT	MT	MT	MT	MT	MT	MT	MT	m ³
01C	Forepeak	1,025	110,30	113,06										
201P	DB tk. PS	1,025	65,00	66,63										
202S	DB tk. SB	1,025	65,00	66,63										
203P	DB tk. PS	1,025	72,40	74,21										
204S	DB tk. SB	1,025	72,40	74,21										
231C	Roll red. Tk. C	1,025	159,60	163,59										
31P	L-tank PS	1,025	138,70	142,17										
32S	L-tank SB	1,025	132,70	136,02										
33P	L-tank PS	1,025	135,70	139,09										
34S	L-tank SB	1,025	135,70	139,09										
402C	DB tk. C	1,025	90,50	92,76										
41P	L-tank PS	1,025	154,90	158,77										
42S	L-tank SB	1,025	154,90	158,77										
501C	Skeg tk. C	1,025	109,30	112,03										
51P	WB Cofferdam PS	1,025	190,70	195,47										
52S	WB Cofferdam SB	1,025	190,70	195,47										
64C	Roll red. Tk. C	1,025	439,90	450,90										
73C	Aftpeak DB tk. C	1,025	51,90	53,20										
11P	Deep tk. PS	1,000	62,60		62,60									
11S	Deep tk. SB	1,000	62,60		62,60									
21P	Wing tk. PS	1,000	103,06		103,06									
22S	Wing tk. SB	1,000	103,06		103,06									
301C	DB tk. C	1,000	84,30		84,30									
302C	DB tk. C	1,000	76,60		76,60									
61P	Deep tk. PS	1,000	110,50		110,50									
62S	Deep tk. SB	1,000	110,50		110,50									
71P	Aft Wing tk PS	1,000	36,80		36,80									
72S	Aft Wing tk SB	1,000	35,00		35,00									
74C	Stern tank C	1,000	120,60		120,60									
216P	FO tk., A-deck	0,850	3,30			2,81								
217S	FO tk. 1st deck	0,850	1,20			1,02								
321P	FO Settling tk. 1 PS	0,850	22,30			18,96								
322S	FO Settling tk. 2 SB	0,850	24,20			20,57								
323P	FO Service tk. 1 PS	0,850	18,70			15,90								
324S	FO Service tk. 2 SB	0,850	19,80			16,83								
410C	FO Overflow tk. C	0,850	65,70			55,85								
411C	FO Deep tk. C	0,850	168,50			143,23								
412C	FO Deep tk. C	0,850	168,50			143,23								
510C	FO Deep tk. C	0,850	297,10			252,54								
63C	FO Deep tk. C	0,850	112,30			95,46								
325P	Liquid Mud tk. 1 PS	2,800	119,50				334,60							119,50
326S	Liquid Mud tk. 2 SB	2,800	119,50				334,60							119,50
327P	Liquid Mud tk. 3 PS	2,800	116,00				324,80							116,00
328S	Liquid Mud tk. 4 SB	2,800	116,00				324,80							116,00
329P	Liquid Mud tk. 5 PS	2,800	116,00				324,80							116,00
330S	Liquid Mud tk. 6 SB	2,800	116,00				324,80							116,00
425P	Brine tk. 1 PS	2,500	209,00					522,50						209,00
426S	Brine tk. 1 SB	2,500	209,00					522,50						209,00
421 P	Base Oil tk. 1 PS	0,871	101,90						88,70					101,90
422 S	Base Oil tk. 2 SB	0,871	101,90						88,70					101,90
521P	Methanol	0,800	145,50							116,40				145,50
522S	Special Product	1,200	146,30								175,56			146,30
311P	BHS tk. 1 PS	2,160	55,00									118,80		
312S	BHS tk. 2 SB	2,160	55,00									118,80		
313P	BHS tk. 3 PS	2,160	55,00									118,80		
314S	BHS tk. 4 SB	2,160	55,00									118,80		
315P	BHS tk. 5 PS	2,160	55,00									118,80		
316S	BHS tk. 6 SB	2,160	55,00									118,80		
317P	BHS tk. 7 PS	2,160	55,00									118,80		
318S	BHS tk. 8 SB	2,160	55,00									118,80		
424P	Mud Slop PS	2,500	93,40									233,50	233,50	93,40
424S	Mud Slop SB	2,500	93,40									233,50	233,50	93,40
	ORO		1 803,40											1 803,40
All capacities @ 100%				2 532,06	905,62	766,36	1 968,40	1 045,00	177,41	116,40	175,56	1 417,40	467,00	1 803,40
				BW/ DW	FW	FO	Mud	Brine	Base Oil	Methanol	Special Product	Dry bulk	Slop	ORO
		t/m ³	m ³	MT	MT	MT	MT	MT	MT	MT	MT	MT	MT	m ³

All information in this document are provided in good faith without any guarantee. Please contact Remøy Shipping AS to verify the information in this document prior to using or relying on any of the information in this document.